

 mapfre Insurance®

Reflections

2025 Community Report

Contents

3 Message from Jaime Tamayo

Corporate Volunteer Program

4 2025 Corporate Volunteer Program Numbers

5 Volunteer Categories

6 Highlighting 2025 Volunteers

7 Community Champion

Mapfre USA in the Community

8 Together We Give Program

9 Donation Campaigns

12 Mapfre Summer Internship Program

13 Best Buddies Internship

14 Collision Repair LEND Program

15 PMC Kids Ride



Jaime Tamayo



Dear friends,

At Mapfre, our commitment to our customers, our colleagues, and the communities we serve guides everything we do. It's this shared sense of purpose that transforms our daily work into something far more meaningful. One of the clearest expressions of that purpose is our dedication to volunteering and to supporting partners who make our communities stronger.

In 2025, our foundation marked an extraordinary milestone: its 50th anniversary. This global achievement reflects decades of meaningful impact, touching countless lives across the world. That legacy is not only something to celebrate, but also something we actively carry forward every day, including right here in Massachusetts and throughout the communities where we live and work.

Volunteering is how we bring that legacy to life on a local level. It allows us to step beyond our offices and invest directly in the people, schools, and organizations that advocate for our neighborhoods. At the heart of these efforts are our employees, whose passion, generosity, and commitment make all of this possible. Their contributions are the driving force behind the real, lasting change we're able to create.

If you haven't yet found your way to get involved, I encourage you to take that step. Whether you're just getting started or continuing a long-standing commitment to service, there are countless opportunities to make a difference.

Together, let's keep building on this proud legacy by leading with purpose, supporting one another, and demonstrating the impact we can have when we come together to serve.

Sincerely,

A handwritten signature in black ink, appearing to read 'Jaime Tamayo'. The signature is stylized and fluid, with some overlapping lines.

Jaime Tamayo
President & CEO
Mapfre USA

2025 Corporate Volunteer Program Numbers

29%

of Mapfre USA employees volunteered

1,857

volunteer hours were logged

Mapfre USA collaborated with

36

nonprofit organizations

	2018	2019	2020	2021	2022	2023	2024	2025
Employees	661	941	883	320	327	304	566	542
% of Employees	25%	39%	39%	15%	15%	15%	28%	29%
Relatives / Friends	299	432	59	48	43	41	50	28
Activities	117	252	74	82	76	127	96	83

Volunteer Categories

The projects developed by the Corporate Volunteer Program embrace several lines of action that aim to improve the quality of life for groups at risk of social exclusion. All the actions are geared toward fulfilling the goals of a specific line of action or campaign.

[Click to visit the **Mapfre Insurance in the Community** website.](#)



Nutrition

Providing food for the purpose of fighting hunger and malnutrition through several initiatives, such as food collection campaigns.



Education

Supporting the education of children through supply donations and activities intended to strengthen schools.



Health

Providing support to disadvantaged groups such as the elderly, the sick and people with disabilities, and promoting the donation of blood and bone marrow.



Environment

Participating in environmental care activities such as reforestation, cleaning of woodlands, forests, and beaches, as well as carrying out recycling donation campaigns (batteries, mobile phones, etc.).



Sharing Solidarity

Participating in altruistic and solidarity actions to help the many people who need us. The beneficiaries of our volunteer actions receive solidarity, companionship and action.

Highlighting 2025 Volunteers

In 2025, our volunteers exemplified what it means to truly care for the communities we serve. Their commitment, energy, and compassion brought our values to life as they engaged in meaningful service throughout local neighborhoods and organizations.

From supporting community initiatives to strengthening programs that uplift individuals and families, these volunteers acted as catalysts for positive change. Their efforts not only addressed immediate needs but also helped build stronger communities.

The work of our 2025 volunteers demonstrates the power of collective action and reinforces our shared belief that We Care About Our Communities is more than a guiding principle—it's a way of showing up and making a difference every day.



2025 Community Champion Award

The Community Champion Award recognizes employees who embody our principle of “We Care About Our Communities” by making volunteerism a meaningful part of their daily lives. These individuals lead through action, inspire others to give back, and actively participate in Mapfre USA volunteer initiatives throughout the year.

The 2025 Community Champion Award is Beth Poplawski, who consistently goes above and beyond, making service a meaningful part of her life and inspiring others through her example.

In 2025, Beth participated in 10 different volunteer activities, generously giving her time and energy to support 12 nonprofit organizations. Her commitment extends beyond her own involvement, frequently including her family in volunteer efforts, demonstrating how giving back can be a shared and impactful experience.

Beth also plays a vital role as the Volunteer Lead for our Fundación Mapfre partner, Best Buddies, helping to strengthen our long-standing partnership and furthering their mission through her steady engagement and guidance.

Beth’s passion, reliability, and unwavering commitment to others make her a standout example of what it means to serve with heart. We are proud to recognize her as our 2025 Community Champion.



Beth Poplawski
AI & Digital Enablement Manager
2025 Community Champion Award Recipient

Together We Give Program

At Mapfre USA, We Care About Our Communities — and we show it by taking action together. We're committed to making a meaningful difference in the lives of our employees, customers, agents, and the neighborhoods we serve. One of the most powerful ways we do this is through our Together We Give program.

This program empowers employees to support the causes they care about most. Each year, employees can nominate a nonprofit organization to be considered for funding. The entire company then participates in a vote to select the organization(s) that will receive support through Together We Give.

Employees may choose to contribute \$1 or more per paycheck to the selected organization(s), and Mapfre USA proudly matches every dollar donated—up to \$40,000—to double our collective impact.

Through Together We Give, we're not just donating; we're strengthening communities and making a difference, together.

In 2025, the selected organization was the American Foundation for Suicide Prevention. Over 100 employees contributed \$15,298,20 to the Together We Give Program. With Mapfre USA's match, \$30,596.40 was donated to the American Foundation for Suicide Prevention.

Total donation amount over
\$30,500



**American
Foundation
for Suicide
Prevention**

The American Foundation for Suicide Prevention (AFSP) is a voluntary health organization that gives those affected by suicide, a nationwide community empowered by research, education, and advocacy to take action against this leading cause of death. AFSP is dedicated to saving lives and bringing hope to those affected by suicide, including those who have experienced a loss.

Donation Campaigns

Birthday in a Box

200 boxes of birthday party supplies were donated to the Birthday Wishes organization to support their Birthday-in-a-Box Program. This initiative provides homeless children, in any living situation, with everything necessary for a great birthday celebration.



Box of Hope and Snack Packs

Employees donated items to build 200 boxes of hope and 200 snack packs for the Webster Dudley Food Share. This initiative provides homeless and at-risk individuals, in any living situation, with toiletries, necessities, and food items.

Coat Drive

Employees donated 84 new coats ahead of winter, providing one coat to each of the children in the Worcester Community Action Council Head Start Program.

Dorm Kits

Employees donated items to assemble 10 dorm kits to gift first-generation students participating in Fundación Mapfre's partner program, Bottom Line.



Dress for Success

The Women's Leadership Network invited members to "donate the sparkle". The network collected new and like-new professional purses, handbags, wristlets and jewelry to support Dress for Success.

Nichols College Bison Boutique

The Women's Leadership Network partnered with the Nichols College Career & Professional Development Center to support their annual Bison Boutique collection drive for gently used men and/or women's business professional and casual attire.



Support for flood victims in Texas

Employees donated over \$7,000 to the Community Foundation of the Texas Hill Country in support of relief efforts for those affected by the devastating flooding in Texas.

Thanksgiving Food Drive

Employees donated 200 Thanksgiving meals to the Webster Dudley Food Share, ensuring that families in the local community had a meal to enjoy on the Thanksgiving holiday.

Toy and Clothing Drives

During the holiday season, employees donated new toys and over \$8,400 to purchase new toys and clothing to support families in need through the Massachusetts Wonderfund, Mason Road School and Bartlett High School.



In 2025, Mapfre Insurance hosted 2 blood drives

63

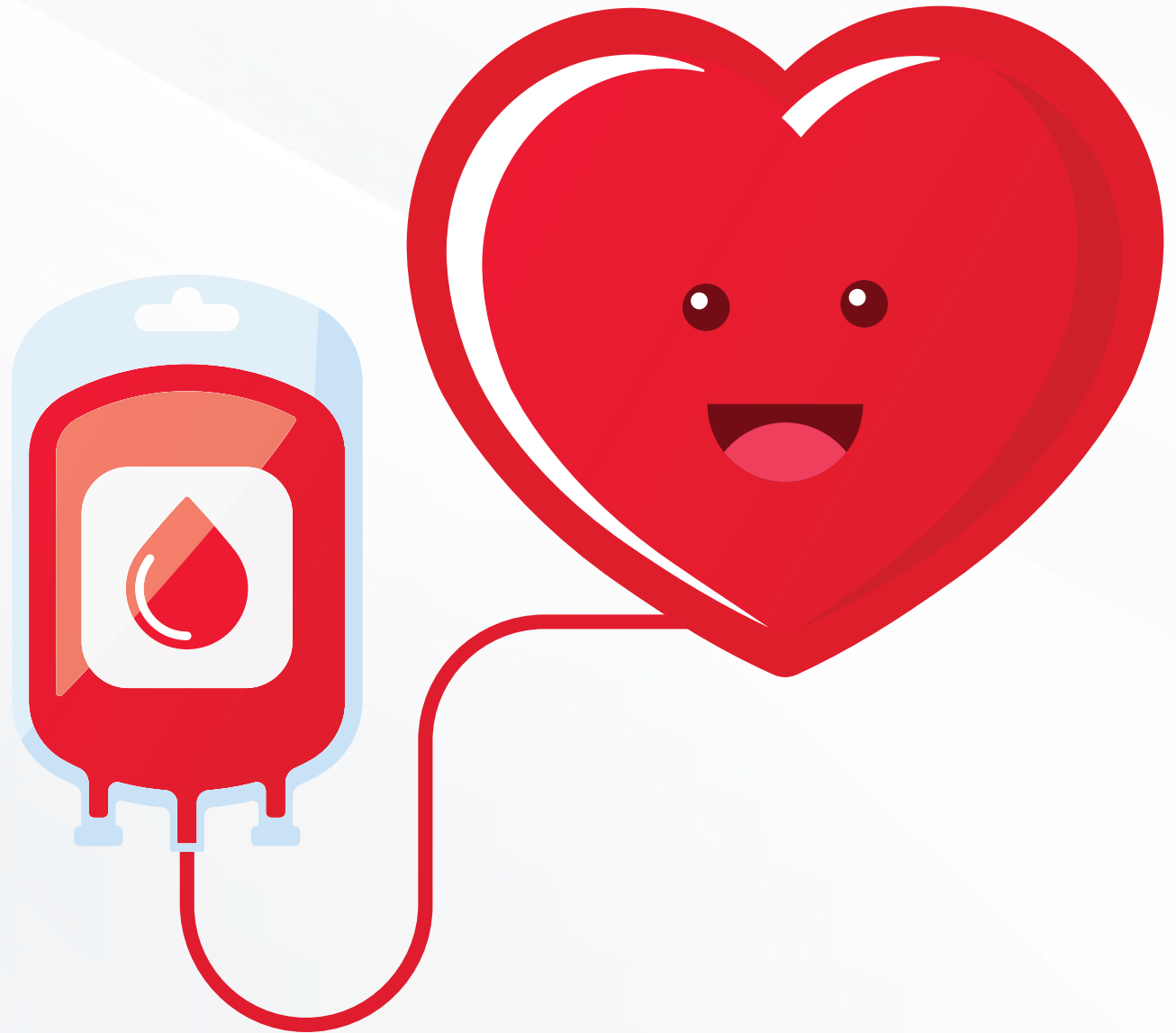
employees
donated approximately

63

pints of blood,
which will save up to

189

lives!



Mapfre Summer Internship Program

In the summer of 2025, Mapfre USA welcomed seven talented interns from universities including, Elon University, Bentley University, the University of Connecticut, and Worcester State University. The interns were assigned to key business areas including Actuarial, Market Pricing, and Marketing Communications, where they contributed to meaningful projects that supported real organizational needs.

Throughout the 10-week program, interns participated in a variety of workshops, trainings, and experiential learning opportunities. These included a Design Thinking workshop, a multi-session leadership speaker series featuring Mapfre leaders across analytics, underwriting, competitive intelligence, and sustainability, and the BMAP interactive insurance simulation, which provided practical exposure to strategic decision-making within an insurance company.



Interns also took part in the United Way Day of Caring volunteer event, a Boston office and Insurance Library visit, and a Presentation & Pitch workshop to prepare for their final presentation of their Group Innovation Project.

During the Group Innovation Project, interns explored how Mapfre might contribute to the sustainable development of local communities. Their work examined emerging societal and environmental needs and applied design thinking principles to generate forward-looking solutions aligned with Mapfre's mission. These proposals were presented to peers and Mapfre leaders in a polished final presentation that demonstrated creativity, analytical rigor, and a strong understanding of Mapfre's values.

Best Buddies Internship

The Best Buddies Internship Program builds on the foundation of the classroom-based Pre-Employment Transitions Services (preETS) program, providing students with meaningful pathways toward employment and independence. Through preETS, students receive employment training and corporate mentorship designed to help them explore and develop their career goals.

After completing a pre-ETS workshop, participants move into the internship program, where they gain real-world work experience and develop essential job skills. Together, these opportunities help increase the likelihood of long-term, successful employment for individuals with Intellectual and Developmental Disabilities (IDD).



At Mapfre, this internship initiative also enriches our employee experience. By thoughtfully matching interns with teams across the organization, we create meaningful partnerships that add value to the business while strengthening our culture. Working with this diverse and talented group of individuals reinforces our commitment to inclusion—and deepens the sense of community that defines who we are.

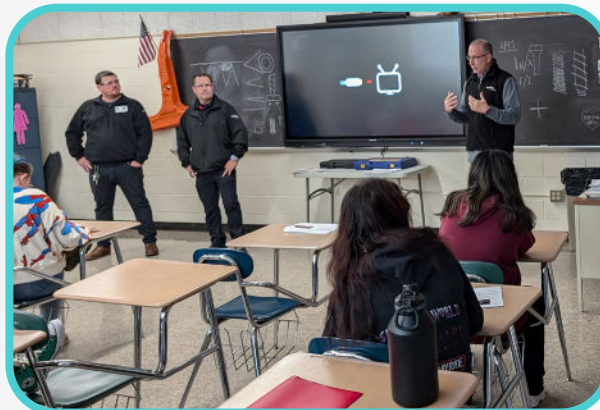
In 2025, six students participated in the Best Buddies internship program: four from Bartlett High School and two from Oxford High School. Throughout the 18-week internship, these students worked closely with various business areas, including custodial, end-user support, claims, physical security, and support services.

Collision Repair LEND Program

Led by Mapfre USA's Material Damage team, the Lend Program began in 2020 at Bay Path Regional Vocational Technical High School. Through a partnership with Insurance Auto Auction (IAA) in Shirley, Massachusetts, Mapfre provides up to two frame-damaged, total-loss vehicles each year to participating schools. These vehicles offer collision repair students valuable, hands-on experience working with complex but repairable unibody and frame damage while allowing schools to maximize the use of their frame machines.

Since 2023, the program has grown to include vendor demonstrations from Safelite Auto Glass and Dent Wizard, field trips to IAA, and accident reconstruction presentations by the Massachusetts State Police. Members of the Material Damage team also visit classrooms to mentor students and share insight into career opportunities in the field.

In 2025, the program included four schools: Bay Path Regional Vocational Technical High School, Montachusett Regional Vocational Technical School, Greater New Bedford Regional Vocational Technical High School, and Smith Vocational and Agricultural High School.



PMC Kids Ride

Mapfre Insurance, in partnership with Pan-Mass Challenge (PMC) and select independent agents, hosted the fourth annual Central Massachusetts PMC Kids Ride on June 7 at Mapfre's Gore Road Campus in Webster, Massachusetts, bringing together families, volunteers, and your riders, all united for a meaningful cause.

Kids ages 2-12 hit the course with enthusiasm, taking on a bike route designed to be inclusive and fun for all riding levels. After crossing the finish line, participants and their families enjoyed a lively afterparty complete with music, games, and activities that kept the excitement going throughout the morning.

What makes the PMC Kids Ride truly special is the impact it empowers children to make. This year's riders continued the tradition of supporting the Dana-Farber Cancer Institute, with 100% of rider-raised funds going directly to advancing cancer research and patient care.

We extend our sincere gratitude to our independent agent partners for once again stepping up in support of this mission. Thanks to their generosity, the registration fee was waived for the first 100 riders who registered using the Mapfre promo code.





Fundación mapfre

Contents

18 Message from Linda Johnson

Fundación Mapfre

19 2025 Fundación Mapfre Global Numbers

20 Fundación Mapfre in the United States

21 Fundación Mapfre 50th Anniversary

Social Action

22 Academy of the Pacific Rim Charter School

23 Best Buddies

24 Bottom Line

25 OneGoal

26 The Real Madrid Foundation

27 United Way of South Central Massachusetts

28 Worcester Community Action Council

Injury Prevention and Road Safety

29 Boston Children's Hospital (BCH)

30 Look Both Ways

31 Mothers Against Drunk Driving (MADD)

32 UMass Memorial Medical Center

33 Road Safety Summit 2025

34 la fundación Magazine USA



Linda Johnson



Dear friends,

I am pleased to share a few words about Fundación Mapfre and its meaningful impact across the United States. For decades, the foundation has worked to promote social well-being through initiatives focused on education, health, road safety, and community development.

We proudly celebrated Fundación Mapfre's 50th anniversary in 2025, coming together in Boston to reflect on its legacy and renew our shared purpose. This occasion was not only a celebration of achievements, but also a reminder of the responsibility we have to support and uplift our communities and each other.

Thank you for taking the time to explore the many incredible ways the foundation makes a difference in our communities. It is my hope that it inspires you to take action, lend a hand, and contribute to making the world a little brighter.

A handwritten signature in black ink that reads "Linda Johnson". The signature is written in a cursive, flowing style.

Linda Johnson,
AVP, Corporate Social Responsibility

2025 Fundación Mapfre Global Numbers

183
projects and programs

Presence in
30 Countries

4,535,966
direct beneficiaries

Global Volunteer Program Numbers

11,905
individual volunteers
(employees and relatives)

2,686
volunteer activities

185,319
direct beneficiaries

**Fundación
mapfre**

Fundación Mapfre is a nonprofit organization founded by Mapfre in 1975. In 2025, it carried out activities in 30 countries, with the main objective of improving people's quality of life and contributing to social progress through multinational programs and initiatives. It is the insurance company's majority shareholder, thus helping to ensure the firm's independence and shareholding stability.

[Click to visit the **Fundación Mapfre** page.](#)

Fundación Mapfre in the United States



In the United States in 2025, Fundación Mapfre funded over \$1.3 million in programs for the following nonprofit organizations.

By the Numbers		
Social Action	FM Partner Since	Direct Beneficiaries
Academy of the Pacific Rim Charter School	2023	545
Best Buddies Massachusetts	2019	216
Bottom Line	2019	1,511
OneGoal	2021	1,512
The Real Madrid Foundation	2019	80
United Way South Central Massachusetts	2009	1,999
Worcester Community Action Council	2018	203
Total Social Action Beneficiaries		6,066
Injury Prevention & Road Safety	FM Partner Since	Direct Beneficiaries
Boston Children's Hospital	2017	53,974
Look Both Ways	2019	
Mothers Against Drunk Driving	2019	
UMass Memorial Medical Center	2023	1,999
Total Injury Prevention & Road Safety Beneficiaries		55,973

Fundación Mapfre 50th Anniversary

In 2025, we marked an extraordinary milestone: the 50th anniversary of Fundación Mapfre. For 50 years, the Foundation has advanced a mission rooted in care, compassion, and hope, supporting people in need around the world and right here in our own communities.

We were proud to celebrate in Boston with Mapfre Global Chairman & CEO and President of Fundación Mapfre, Antonio Huertas, who shared his pride and reflected on the Foundation's impact on millions of lives. Guests also heard inspiring examples of how Fundación Mapfre is advancing education, road safety, health, and social well-being. Dr. David Mooney of Boston Children's Hospital and Kukua Duodu, a Bottom Line alumnus, underscored what makes this work possible: strong local partnerships that bring the mission to life.

A video featuring our local partners highlights the powerful ways Fundación Mapfre is making a difference in our community.



Click to view the Fundación Mapfre Partners Video



Academy of the Pacific Rim Charter School

Academy of the Pacific Rim (APR) is a charter public school whose mission is to empower students of all racial and ethnic backgrounds to achieve their full intellectual and social potential. Students in fifth through twelfth grade engage in intentional learning progression to ensure they are fully prepared to pursue their passions, engage in their communities, and excel in their post-secondary education. Fundación Mapfre has partnered with APR to foster its transformational instructional leadership as well as strengthen teaching and learning at APR to ensure students have access to rigorous curricular experiences that will lead to lives of opportunity and global impact.



Click to visit the [Academy of the Pacific Rim](#) website.

Best Buddies

Since its founding, the Pre-Employment Training program has engaged 28 school districts, approximately 1,382 students, and more than 20 potentially hiring companies in Massachusetts alone. The program model has been implemented in 20 U.S. states while also expanding internationally to Ireland, Philippines, and Turkey. As of December 2025, 4,800 students have engaged in 11,545 career readiness workshops with Best Buddies International across the globe.

BEST BUDDIES[®]



Click to visit the [Best Buddies International](#) website.

Bottom Line

Bottom Line partners with degree-aspiring, first-generation-to-college students from low-income backgrounds, to help them get into college, graduate and go far in life. Bottom Line provides evidence-based, 1:1 college Access and Success Program coaching and Career Connections guidance to more than 1,800 Massachusetts college students (partnering with 18 Massachusetts target colleges and universities). Fundación Mapfre partnered with Bottom Line to support their College Access and College Success Programs. In 2022, the partnership was expanded to provide additional funding to support Bottom Line's Young Men of Color (YMOC).



BOTTOM LINE

Get in. Graduate. Go far.



Click to visit the
Bottom Line website.

OneGoal

OneGoal works with schools and districts to transform postsecondary support through their classroom-based model and OneGoal Leadership Network so that all students can define their futures. By training and supporting excellent teachers already working in low-income public high schools, they can assist in guiding their students to achieve their greatest postsecondary aspirations. These teachers, known as Program Directors, work to ensure their students have a real chance at reaching graduation at the end of their college or technical education. Fundación Mapfre partners with OneGoal to support the cohorts of juniors, seniors, and students in their first year of postsecondary education from Bartlett High School in Webster Massachusetts and Southbridge High School in Southbridge, Massachusetts.



[Click to visit the OneGoal website.](#)

The Real Madrid Foundation

The Real Madrid Foundation seeks to build enthusiasm and passion for sports among all children and youth around the world, providing social sports programs at schools for children ages 6–17. The Real Madrid Foundation uses a flexible and dynamic approach that easily adapts to each school and promotes the integrated development of children through sports. Fundación Mapfre partners with the Real Madrid Foundation to bring its Youth Social Sports program to Park Ave Elementary school in Massachusetts. This sports program fosters physical, intellectual, emotional, and social development for underserved children and youth, and is a means of social inclusion.



Click to visit the [Real Madrid Foundation website](#).

United Way of South Central Massachusetts

United Way of South Central Massachusetts is a volunteer-driven organization that supports local agencies that provide health, education, and financial stability services that profoundly affect the lives of those who live and work in the communities we serve. Its motto “Live United” provides us all the opportunity to join hands, open your hearts, lend your muscles, and find your voice. Through its partnership with Fundación Mapfre, United Way of South Central Massachusetts in turn partners with the Boys & Girls Club of Webster-Dudley and YMCA of Central Massachusetts.



Click to visit the [United Way of South Central Massachusetts](#) website.

Worcester Community Action Council

Founded in 1965 as part of the War on Poverty, Worcester Community Action Council (WCAC) is one of 1,000 community action agencies across the U.S. and 23 in Massachusetts created to address disparities throughout the nation. WCAC embodies service to the community through their mission of helping people move to economic self-sufficiency through programs, partnerships, and advocacy. WCAC's Head Start program seeks to ensure the healthy development and proper growth of children living in vulnerable situations. Fundación Mapfre partnered with WCAC's Head Start Program to support its nutritional and Science Technology Engineering Arts Mathematics programs.



Click to visit the [Worcester Community Action Council](#) website.

Boston Children's Hospital (BCH)

Boston Children's Hospital (BCH) is dedicated to improving and advancing the health and well-being of children around the world through its life-changing work in clinical care, biomedical research, medical education, and community engagement. BCH's Injury Prevention Program, part of their Trauma Center, is dedicated to dramatically decreasing the number of preventable injuries through research and public education. Fundación Mapfre partnered with BCH's Injury Prevention Program to build the "Safe Play Starts Here" program with a goal of educating the community to take measures to prevent injuries, especially injuries sustained by children, in their homes. Health educators travel in the Injury Prevention van, holding workshops throughout Massachusetts and educating communities on how to avoid unintentional injuries. Thanks to Fundación Mapfre's support, the BCH Injury Prevention team has expanded its community education across the state.



Where the world comes for answers



[Click to visit the Boston Children's Hospital website.](#)

Look Both Ways

Look Both Ways, funded by Fundación Mapfre since 2019, takes an interactive approach to change behaviors on the road.

In 2025, Fundación Mapfre and the Massachusetts Department of Transportation (MassDOT) partnered to launch its third annual Road Safety PSA contest to Massachusetts high school students. The contest encouraged teens to produce a script that highlights the importance of safe habits behind the wheel. The winning script came from Bishop Feehan High School.

LOOK BOTH WAYS



Look Both Ways: PSA 2025

Click to visit the [Look Both Ways](#) website.

Mothers Against Drunk Driving (MADD)

Mothers Against Drunk Driving (MADD) knows that the hope for a safer future depends on tomorrow's drivers. By getting today's youth off to a good start, they are taking a step toward fulfilling their vision of a nation without drunk driving. MADD is focused on tackling underage drinking, a problem that threatens the safety of kids and endangers entire communities, now and down the road. MADD is also committed to serving victims of drug-impaired driving and to help advocate for evidence-based approaches to solving this problem. Fundación Mapfre partners with MADD to support its school-based educational program, Power of ME, which focuses on alcohol use prevention and vehicle safety for fourth and fifth grade students. Funding also supports community and school-based programs for children, families, and the public. With Fundación Mapfre's support, MADD travels to community events such as health fairs, expos, school events and community days throughout Massachusetts and Connecticut.

MADD™

**IMPAIRED
DRIVING
ENDS HERE.**



Click to visit the
Mothers Against Drunk Driving (MADD) website.

UMass Memorial Medical Center

UMass Memorial Medical Center is committed to improving the health of people in Central Massachusetts through excellence in care, comprehensive health services, teaching and research. The Injury Prevention Center at UMass Memorial Medical Center is leading a coordinated effort to reduce injuries, guided by the belief that everyone should have access to accurate and up-to-date information and resources to live a healthier, safer life. Fundación Mapfre partnered with the UMass Memorial Injury Prevention Center to create Safety Quest, an innovative mobile classroom delivered to schools and community events in Massachusetts. Safety Quest helps middle school students learn how to stay safe while becoming injury-prevention advocates for their peers and families.

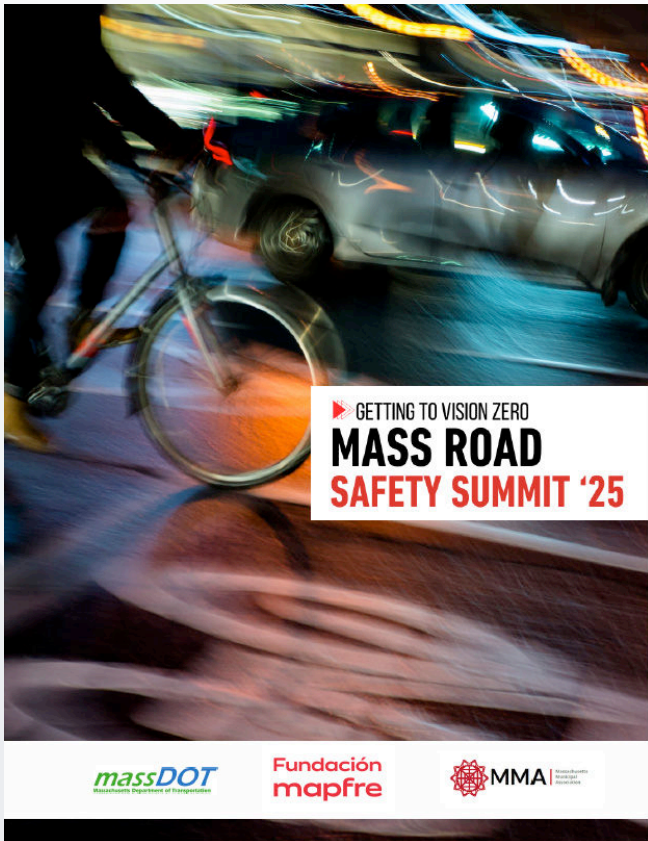
In 2025, Fundación Mapfre partnered with UMass Memorial Children's Medical Center to host the Teddy Bear Clinic, a community event in which children of all ages can learn about health and safety through fun and interactive booths.



[Click to visit the Safety Quest webpage.](#)

Road Safety Summit 2025

Fundación Mapfre, in partnership with the Massachusetts Department of Transportation and Massachusetts Municipal Association (MMA), hosted its second Massachusetts Road Safety Summit. The summit convened transportation planners, road safety advocates, law enforcement and municipal leaders to share solutions and accelerate the Vision Zero Movement.



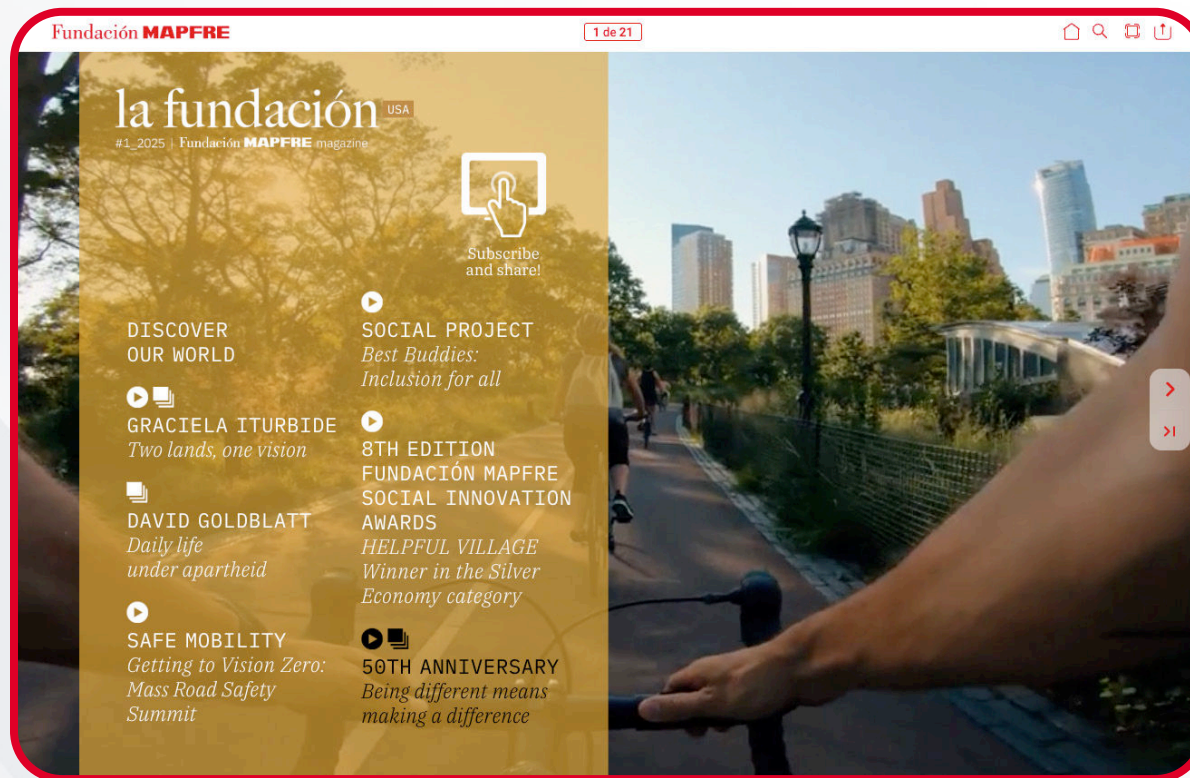
[Click here to read the outcomes and results of the summit](#)

la fundación Magazine USA

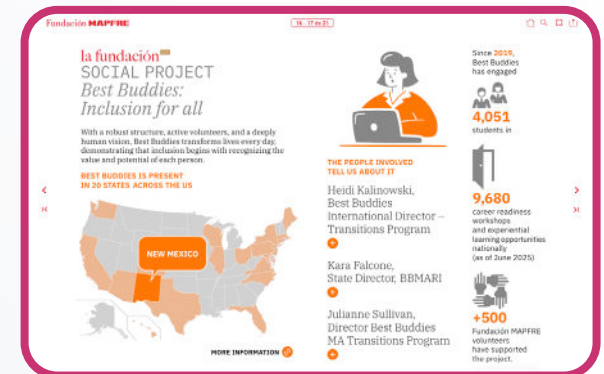
In 2025, Fundación Mapfre launched la fundación USA, a new interactive magazine that showcases the incredible work of Fundación Mapfre across the United States.

From road safety and community programs to arts and culture, explore how we care for our customers and communities through education, safety and compassion.

Explore the first issue and subscribe to receive future editions:



[Click here to read la fundación USA](#)



Fundación mapfre